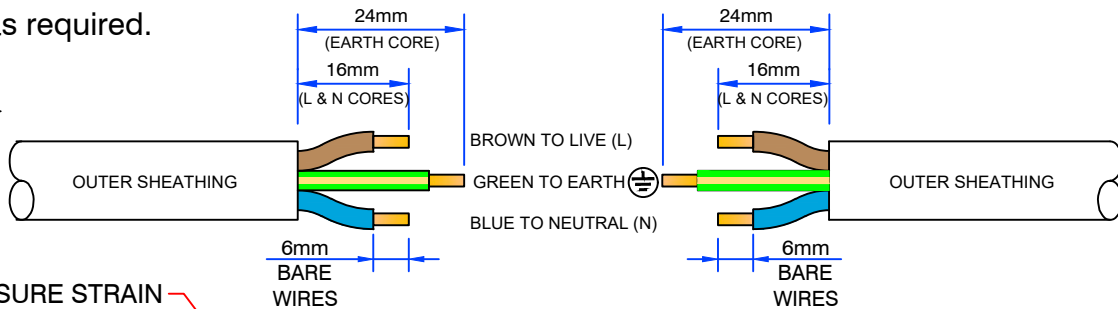


# FIT OFF GUIDE - RE-WIREABLE INSTALLATION COUPLERS

Re-Wireable Installation Couplers are designed to be wired with  $2.5\text{mm}^2$  multi-strand flex cable or T.P.S. cable as required:

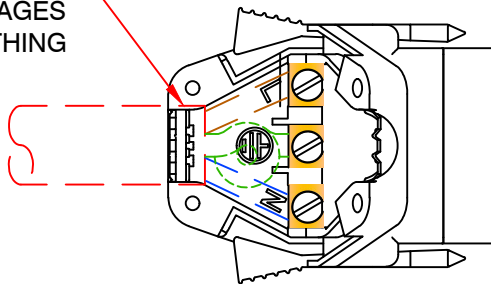
- Strip cable as per figure (a).
- Connect EARTH wire with GREEN/YELLOW stripes (or all GREEN) to EARTH terminal marked  $\oplus$
- Connect BROWN (or RED) wire to LIVE terminal marked 'L'
- Connect BLUE (or BLACK) wire to NEUTRAL terminal marked 'N'
- Ensure that the outer sheathing of either the multi-strand flex cable or the T.P.S. cable overlaps the strain relief section of the installation coupler as shown in the figure (b).
- Ensure terminal screws are tightened firmly and that none of the copper wiring is exposed as per figure (c).
- Close cover of installation coupler and tighten the two (2) assembly screws firmly to ensure strain relief is achieved as shown in figure (d).
- Test as required.

**Figure (a).**



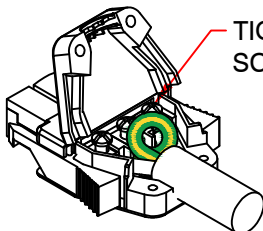
**Figure (b).**

ENSURE STRAIN RELIEF ENGAGES OUTER SHEATHING

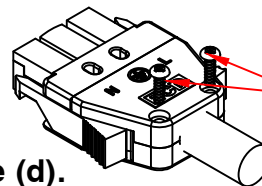


ENSURE STRAIN RELIEF ENGAGES OUTER SHEATHING

**Figure (c).**



**Figure (d).**



ESTABLISHED 1979

**Electric Cable Duct Systems Pty. Ltd.**

Ph: 1300 123 ECD (323) Fax: (03) 9899 5042

Email: [info@ecd.net.au](mailto:info@ecd.net.au)

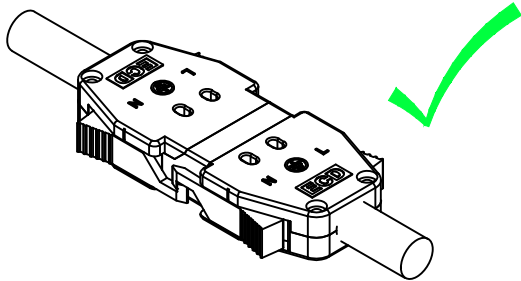
[www.ecd.net.au](http://www.ecd.net.au)

ABN 80005544105

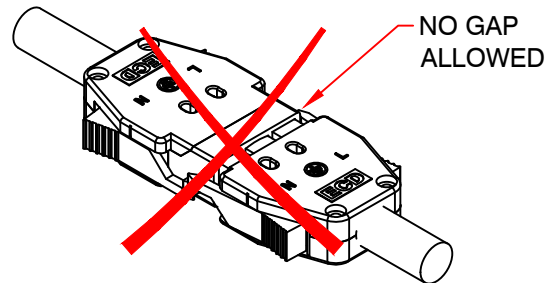
# FIT OFF GUIDE - RE-WIREABLE INSTALLATION COUPLERS

Installation Couplers are required to be:

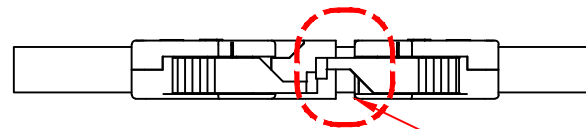
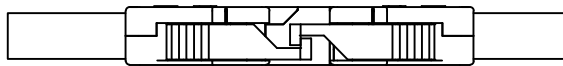
- Fully engaged when connected with the locking clips latched.



**CORRECT**



**INCORRECT**



- Installed so the sum of the loads on all outlets does not overload the starter socket (input coupler) and cable.
- Installed with loads to be distributed as evenly possible between outlets.
- Installed to prevent excessive strain on installation couplers or cable. If unsure, support or fix installation couplers and cable.
- Installed and tested in accordance with AS/NZ 3000 (Australian and New Zealand Wiring Rules).

Note:

1. Use of installation coupler systems are not replacements for plug and socket outlet systems complying with AS/NZS 3112, AS/NZS 3123 or AS/NZS 60320.1.
2. Interchangeability with other installation coupler systems is not ensured and although no dangerous compatibility issues are anticipated mixed system installations are not advised
3. The installation coupler is for use in readily accessible areas
4. Installation coupler systems are intended for connection and disconnection without load
5. test plugs are supplied with each installation. Additional test plugs are available on request. Please contact our sales team



ESTABLISHED 1979

**Electric Cable Duct Systems Pty. Ltd.**

Ph: 1300 123 ECD (323) Fax: (03) 9899 5042

Email: [info@ecd.net.au](mailto:info@ecd.net.au)

[www.ecd.net.au](http://www.ecd.net.au)

ABN 80005544105