

## Soft Wired Couplers

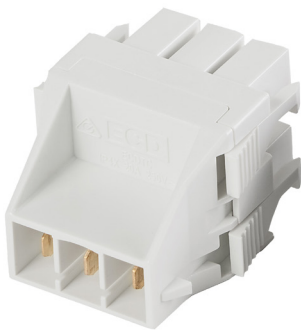
### AT A GLANCE...

- Suitable for: Connecting to the soft wired circuit
- Colours: Black & White

**“Easy as ECD®”**

- ECDTC – used to convert 1 soft wired input into 2 outputs.
- ECDFC/MC – used to shorten a soft wired lead to a custom length.
- ECDFC/MC – can be wired to an appliance (ECDMC = power in, ECDFC = power out) to allow the appliance to be powered by the soft wired circuit.
- ECDFC – can be used as an alternate starter socket where space is limited & doesn't allow for a full size starter (ECDSSP) eg- in shallow floor boxes.
- 20 Amp rated.
- Compatible with the ECD Soft Wiring System.
- Standard colours are Black & White.
- Test Plugs (ECDSWTP) are available for testing soft wired circuits.
- Products comply with AS/NZS61535:2011 – refer approval nos GMA-515334-EA & SAA202417.

**ECBTCWE**



**ECBTCBK**



**ECDFCWE**



**ECDFCBK**



**ECDMCWE**



**ECDMCBK**



ESTABLISHED 1979

**Electric Cable Duct Systems P/L**

Phone: 1300 123 ECD (323)

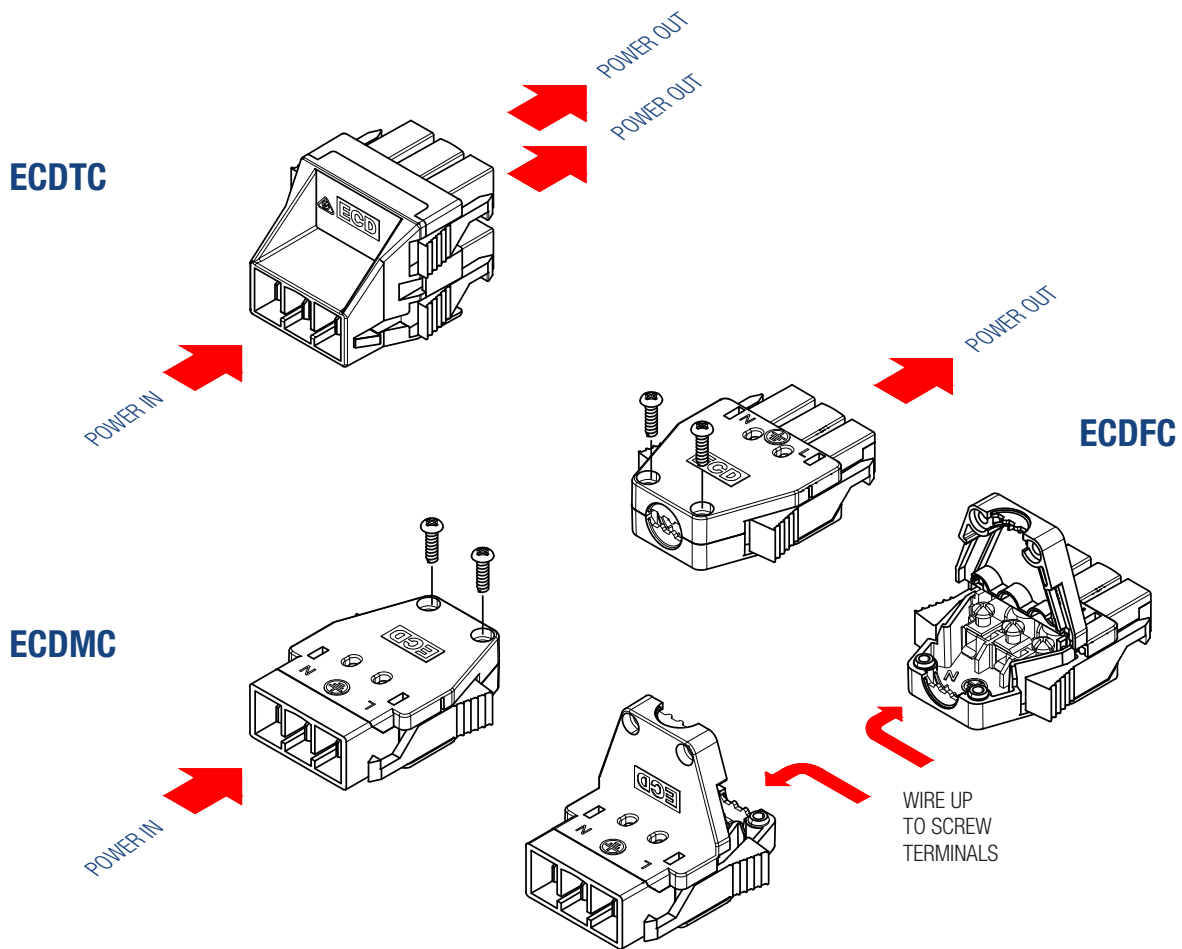
Fax: 1300 372 825

Email: [info@ecd.net.au](mailto:info@ecd.net.au)

website: [www.ecd.net.au](http://www.ecd.net.au)

ABN 80005544105

## ASSEMBLY DIAGRAM COUPLERS



## PARTS LIST

DESCRIPTION	PART NO.	COLOUR
Tee Coupler unit 1 x input & 2 x output	ECDTC	Nominate (see below)
Male Coupler rewirable (screw terminal)	ECDMC	Nominate (see below)
Female Coupler rewirable (screw terminal)	ECDFC	Nominate (see below)

Nominate Colour/Finish: BK=Black, WE=White

Note: All ECD soft wiring must be installed by a licenced electrical contractor as per AS/NZ3000 Wiring Regulations