

HEAVY DUTY & WATER RESISTANT Flush Floor Box

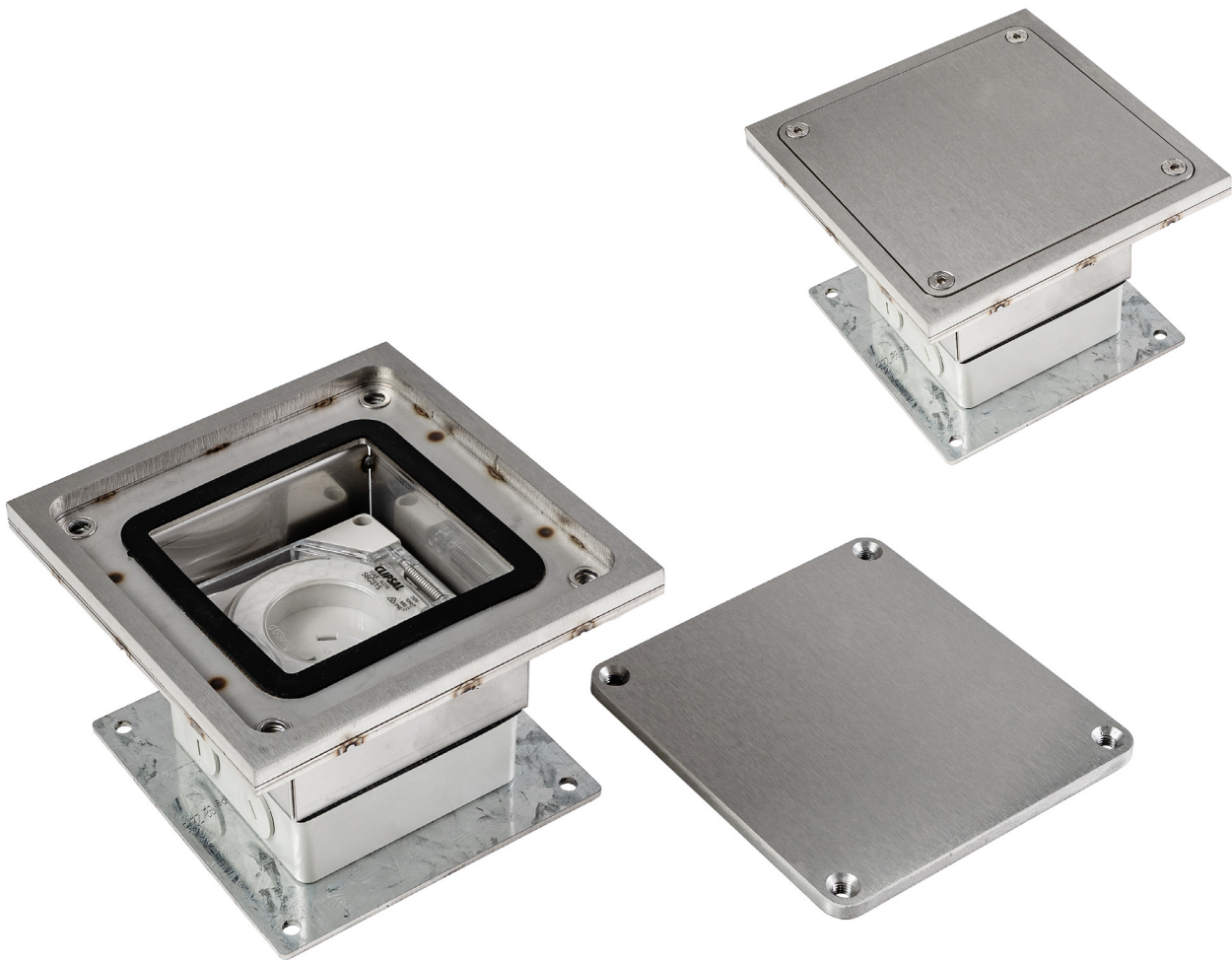
Square Edged, Stainless Steel

AT A GLANCE...

- Load Rating: Suits vehicle traffic – see chart over
- Capacity: 1 No. IP66 Industrial socket module
- Box Size: 175 x 175 x 141mm deep
- Lid Material: Stainless 304 – No. 4 Linished

“Easy as ECD®”

- Heavy duty – load rated floor box suitable for vehicular traffic.
- Square, drop in, screw fixed lid with neoprene gasket (for water resistance when lid is in closed position).
Note: Not suited for external use.
- Frame has square edges (not bevelled) to allow flush fitting to adjacent floor finish (typically timber, tiles or vinyl).
- 304 Grade solid stainless steel lid (8mm thick) with No. 4 Linished finish to meet P1 requirements for slip resistance in public spaces (dry areas).
- Capacity for 1 No. IP66 Industrial socket module (enclosure supplied, excludes socket outlets).
- This product has been examined in accordance with AS 3000 and conforms to A.C.M.A. requirements.



ESTABLISHED 1979

Electric Cable Duct Systems P/L

Phone: 1300 123 ECD (323)

Email: info@ecd.net.au

Fax: 1300 372 825

website: www.ecd.net.au

ABN 80005544105

ASSEMBLY DIAGRAM

HEAVY DUTY AND WATER RESISTANT FLUSH FLOOR BOX – SQUARE EDGED, STAINLESS STEEL – FBIP1SQF

POINT LOAD TABLE	
LOAD TYPE	MAX LOAD
25 X 25 PT. LOAD	1,400kg
150 X 60 WHEEL	1,550kg
TOTAL VEHICLE (1550kg x 4 wheels)	6,200kg

NOM. CAR KERB WEIGHT 2000KG
(LARGE SUV)

